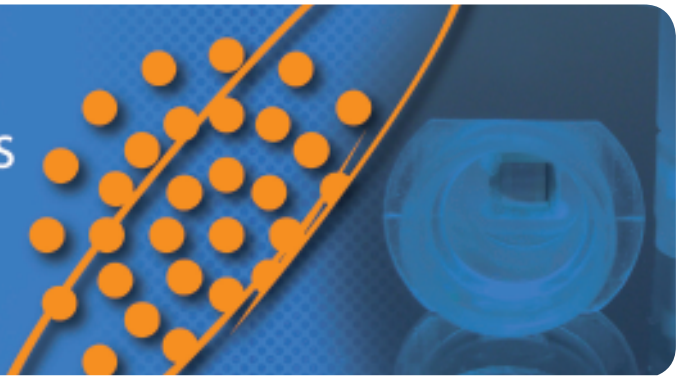


Innovative tools for microbial diagnostics

- ✓ Fast and Simple Microbial Diagnostics
- ✓ User Friendly Products
- ✓ Fast Routine and On-Site Analyses



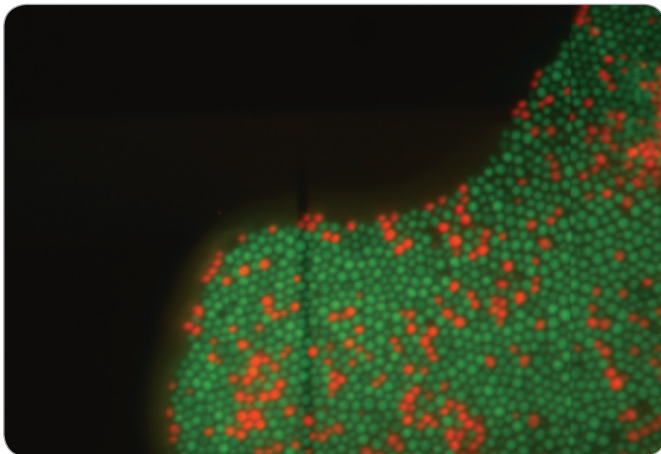
SIEVE-ID® GENERIC KIT

The Sieve-ID® Generic Kit introduces a new generation in diagnostics by offering a flexible and versatile usage, all just in one kit.

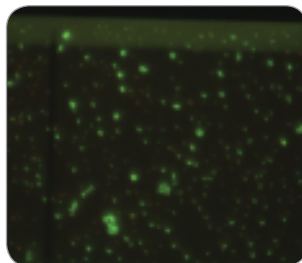
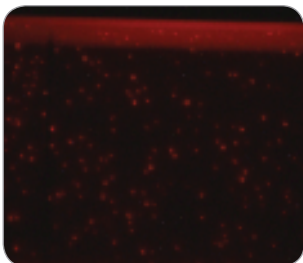
VIABILITY SCREENING

In diagnostics, discrimination between dead and viable cells is of utmost importance to ensure reliable results and sound decisions.

The novel Sieve-ID® Viability Screening assay allows rapid cell staining using the viability stain of your choice. Efficient quantitative live / dead screening of cells can be obtained within minutes.



Staining of yeast cells for viability screening. Red fluorescence represents dead cells, while green fluorescence represents viable cells.



Staining of Salmonella cells for viability screening. Red fluorescence represents dead cells, while green fluorescence represents viable cells. The same sample analyzed using two different excitation and emission spectra.

RAPID - FLEXIBLE - RELIABLE

1

RAPID:

Cell viability staining and results are obtained within minutes. Live / dead ratio and cell quantification is provided simultaneously.

2

FLEXIBLE:

Viability stain of your choice can be applied using the same protocol.

3

RELIABLE:

Provided protocols are robust and generate highly reliable results.

The novel Sieve-ID® Generic Kit offers a rapid, robust research tool for a variety of laboratory applications, all in just one kit. The Sieve-ID® Generic Kit introduces a new level for diagnostics, extending possibilities in experimental design.

ORDERING INFORMATION

Product Number	Name	Kit Size
ID-201001-10	Sieve-ID® Generic Kit	10 assays
ID-201001-20	Sieve-ID® Generic Kit	20 assays
ID-201001-50	Sieve-ID® Generic Kit	50 assays

For more product information and ordering:

www.innosieve.com
sales@innosieve.com



Head office

Celsiuslaan 5
5251ZB Vijmen
The Netherlands

R&D facilities

the Droevendaalsesteeg 1
6708PB Wageningen
The Netherlands

Contact info

Tel: +31 (0)6 46 717 500
Email: Info@innosieve.com
www.innosieve.com

INNOVATIONS of
TOMORROW